

# MONTHLY MEMBERSHIP PROGRESS REPORT

District A 12

Results as of: 6/30/2020

GMT:

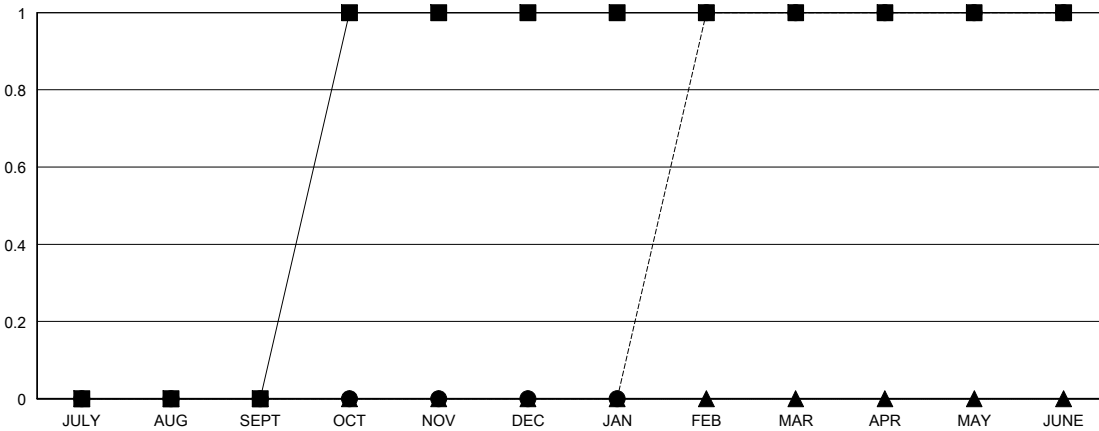
LOCATION ONTARIO

GMT CA

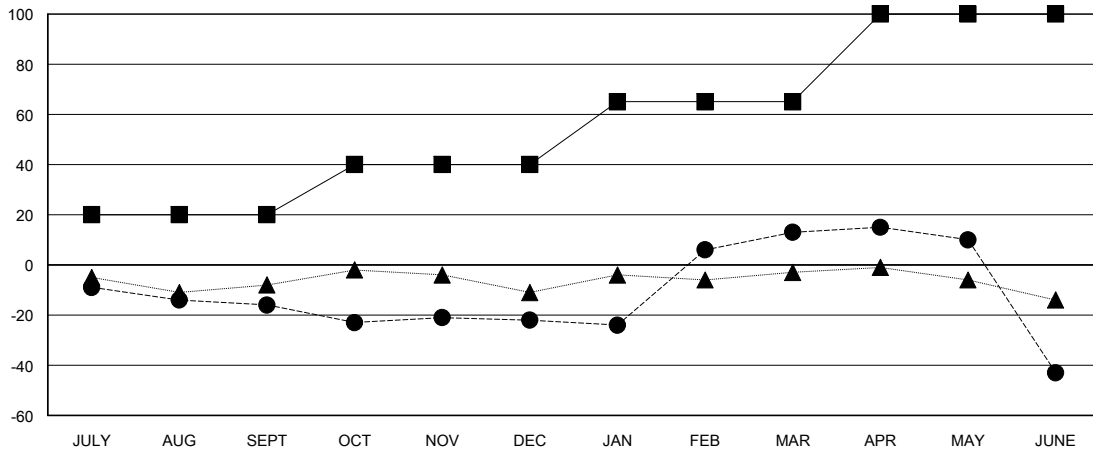
Clubs			
RESULTS FOR 2019-2020			
QUARTER	NEW CLUB GOAL	NEW CLUBS	DROPPED CLUBS
JULY/AUG/SEPT	0	0	0
OCT/NOV/DEC	1	0	0
JAN/FEB/MAR	0	1	0
APR/MAY/JUNE	0	0	0

Members			
RESULTS FOR 2019-2020			
QUARTER	MEMBER GROWTH NET GOAL	MEMBER GROWTH ACTUAL	DROPPED MEMBERS ACTUAL (including transfers)
JULY/AUG/SEPT	20	9	24
OCT/NOV/DEC	20	29	32
JAN/FEB/MAR	25	55	17
APR/MAY/JUNE	35	15	65

GOALS AND ACTUAL NEW CLUBS CUMULATIVE



GOALS AND ACTUAL MEMBERS CUMULATIVE



DROPPED CLUBS: 0	22 CLUBS OF 47 ADDED 1 OR MORE NEW MEMBERS	<b>GENDER DISTRIBUTION</b> MALE 651 (64.01%) FEMALE 366 (35.99%)
<b>DROPPED MEMBERS</b> DECEASED 16 CLUB CANCELLED 0 OTHER 122 TOTAL 138	<a href="#">CLICK HERE FOR CUMULATIVE MEMBERSHIP DATA</a>	TOTAL FAMILY UNIT MEMBERS 229 FAMILY MEMBERS PAYING HALF DUES 118